

# MERČER

HOUSE

UPTOWN DUBAI





Since 2014, we have approached every project with a deep understanding of the human experience. We believe our devotion to craft and exceptional detail is what makes our developments stand out among the UAE's expanding skyline in ways that few buildings can.

While others try to be the biggest, we focus on being the best.

We are a boutique property developer but, at heart, we are a family who designs for other families. We nurture elevated living from the ground up. Instead of following trends, we follow our instinct for what will satisfy our customers and their fundamental need to belong.

It's a philosophy we call 'Live by Design' a way of thinking that creates homes, spaces, and surroundings that are in complete synergy with your life.

The result is a portfolio of modern yet welcoming communities. Diverse living spaces that capture the true essence of home for every individual. Through our developments and connected initiatives, we continue to advocate for craft and design as a catalyst for growth within the Dubai art community.



THE BEATING

HEART OF

UPTOWN DUBAI  
UPTOWN DUBAI



# MERCER HOUSE

Set in a newly revitalised Uptown Dubai, Mercer House celebrates a refreshed energy whereby lives and lifestyles are enhanced through creativity, design, wellness, and entertainment.

At the heart of Uptown, the property represents a place of belonging for everyone, where the boundaries between shared and resident-exclusive experiences begin to overlap. Built in conjunction with its vibrant surroundings, Mercer House exemplifies a vision of active urban living, raising the benchmark for designer developments across Dubai in the process.







# HOME TO A NEW ICON A NEW ICON



In addition to a collection of contemporary apartments, Mercer House offers access to a design icon with stunning architecture, world-class amenities, high-end shopping, and sociable dining.

Mercer House is a lifestyle destination that is set for new experiences and perspectives in Uptown Dubai District. The theme of connection is present throughout, welcoming fresh thinking, self-expression, and discovery. Mercer House is your introduction to a plethora of entertainment, reserved for those who demand the best.



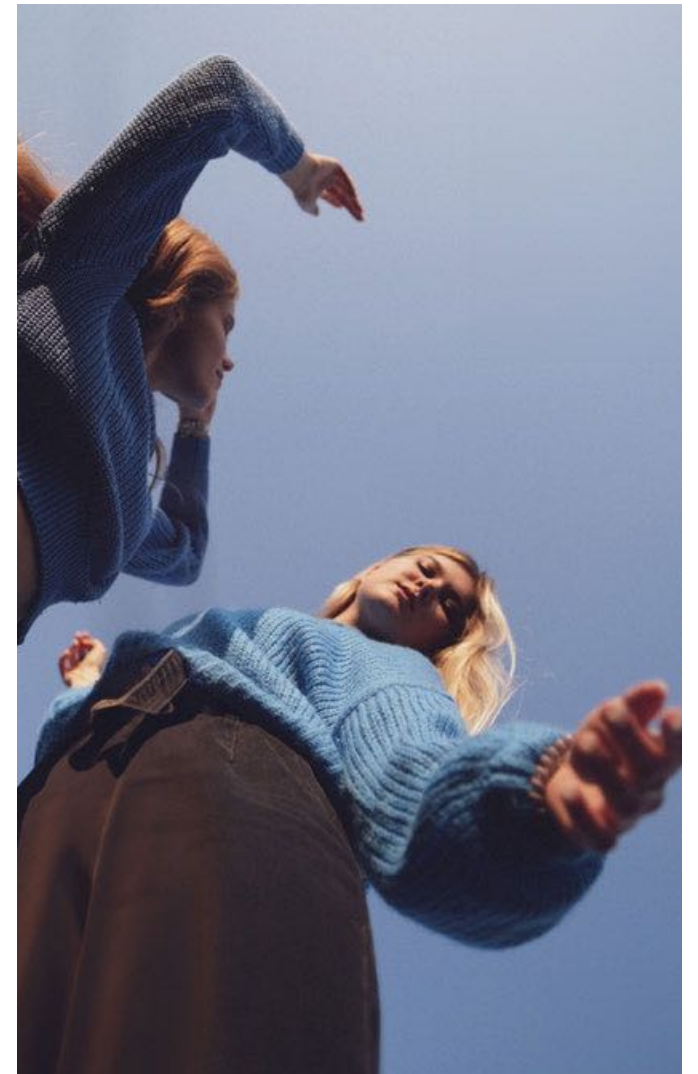
ENERGISED URBAN

LIVING  
LIVING





# UPTOWN REVITALISED



Uptown Dubai is a beacon for new living and working. Framing the Dubai skyline, with two iconic towers, it is flanked by a series of premium commercial and residential buildings.

A place to see and be seen, Uptown Dubai is a district set to make a statement. A gateway to a new perspective from which to experience Dubai, set within a plaza that's thriving in attractions, venues, and installations. The spectrum of this unique location includes experiences through play, art, performance, and relaxation.



# DRIVING

- 01 MINUTE

Uptown Plaza
- 05 MINUTES

DMCC Metro Station
- 06 MINUTES

Marina Mall
- 08 MINUTES

Montgomerie Golf Club
- 10 MINUTES

Emirates Golf Club
- 11 MINUTES

Jumeirah Islands Clubhouse
- 12 MINUTES

Ibn Battuta Mall
- 15 MINUTES

Mall of the Emirates
- 17 MINUTES

Palm Jumeirah
- 18 MINUTES

Burj Al Arab
- 22 MINUTES

Dubai Mall & Burj Khalifa
- 25 MINUTES

Dubai International Financial Centre
- 25 MINUTES

Al Maktoum International Airport
- 30 MINUTES

Dubai International Airport

# DISTANCES



MERÇER  
HOUSE



# UPTOWN DUBAI'S URBAN

PLAYGROUND  
PLAYGROUND





# CREATING CONNECTION CONNECTION

The harmonious layers of Mercer House are inspired by the intricacies found in the natural world. These curved and linear forms help to soften the built environment, connecting contemporary architecture to the organic environment.

The two vast towers are alive with energy and modernity. They are designed to make residents feel more in tune with their surroundings while creating a soothing balance between outside and in.



# WELCOMING REFRACTIONS REFRACTIONS

Emanating the constant motion of its location, Mercer House invites you into a state of seamless flow. The facade design elements are inspired by nature, taking on the undulating qualities of water.

Soft curved lines, organic shapes, and reflective surfaces take control of natural light, to illuminate rooms, soften corners and instil a sense of belonging. Angled mirrors create illusions of dreamlike spaces, while metallic accents recreate the effects of sunlight over pristine oceans.





# WELCOME



# TO THE PLAZA

The arrival area at Mercer House welcomes you with three convenient drop-off zones and experiential escalators, seamlessly transporting you from the Ground Floor to the chic retail haven on the Podium.





## CONVENIENCE INCLUDED INCLUDED



Throughout the expansive layers and levels of each of its towers, Mercer House offers a vast collection of amenities and facilities. Seamlessly adapted to the building's form, and with a focus on sports and wellness, glass boxes host shared hubs of activity and communal spaces.

The ground floor offers a multitude of amenities and services that bring you everything you need, before you have to ask.



# UPTOWN PLAZA VIEWS

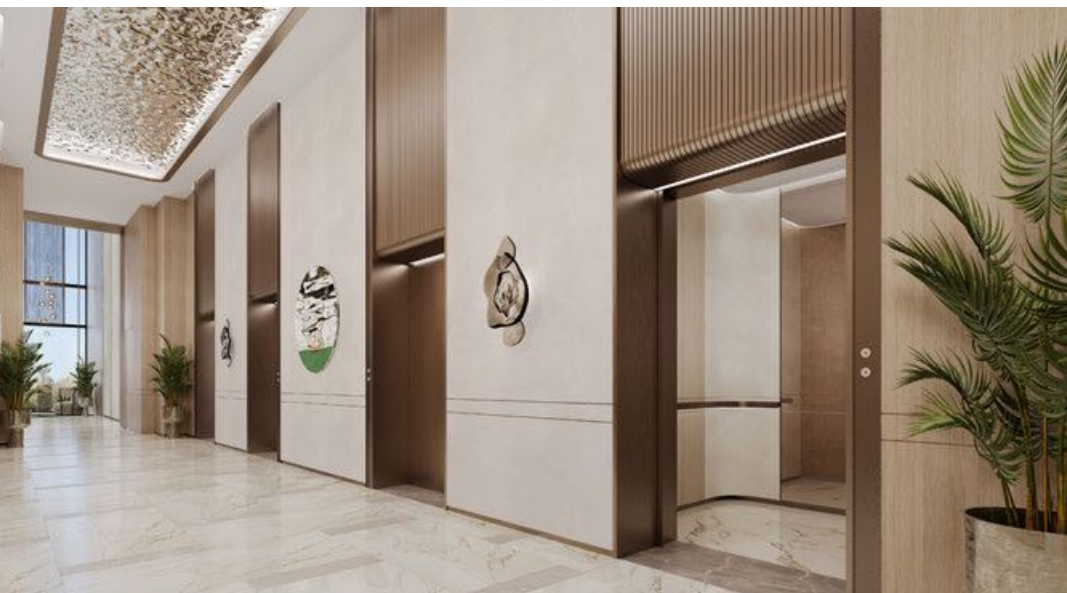
From its vantage point, Mercer House podium offers mesmerizing views of the bustling core of Uptown Dubai. The podium provides a dynamic and multifaceted experience set against the vibrant backdrop of Uptown Plaza. While floor-to-ceiling windows in the residences allow residents to enjoy the energy and dynamism of Uptown Dubai from the comfort of their homes.











# THE LOBBY

Once inside Mercer House, you are welcomed with a warm reception in the vibrant entrance lobby. Here, you will be immersed in mirrored illusions, bright detailing, and expansive light. The space is adorned with selected artworks from Dubai's most up-and-coming talent, courtesy of the Ellington Art Foundation.

From the lift lobby, resident-only access guides you to your apartment or penthouse, the upper-floor amenities, and the urban beach club.











# MULTI SPORTS HALL

Indulge in an array of athletic pursuits at Mercer House's multi-sports hall, boasting six exhilarating ball games. Residents can relish the thrill of a full-size tennis court, showcase their basketball prowess, immerse themselves in football excitement, partake in a spirited game of badminton, experience the fast-paced action of netball, and revel in the camaraderie of volleyball. Elevate your active lifestyle within this dynamic space, meticulously designed for residents to enjoy a diverse range of sporting activities.





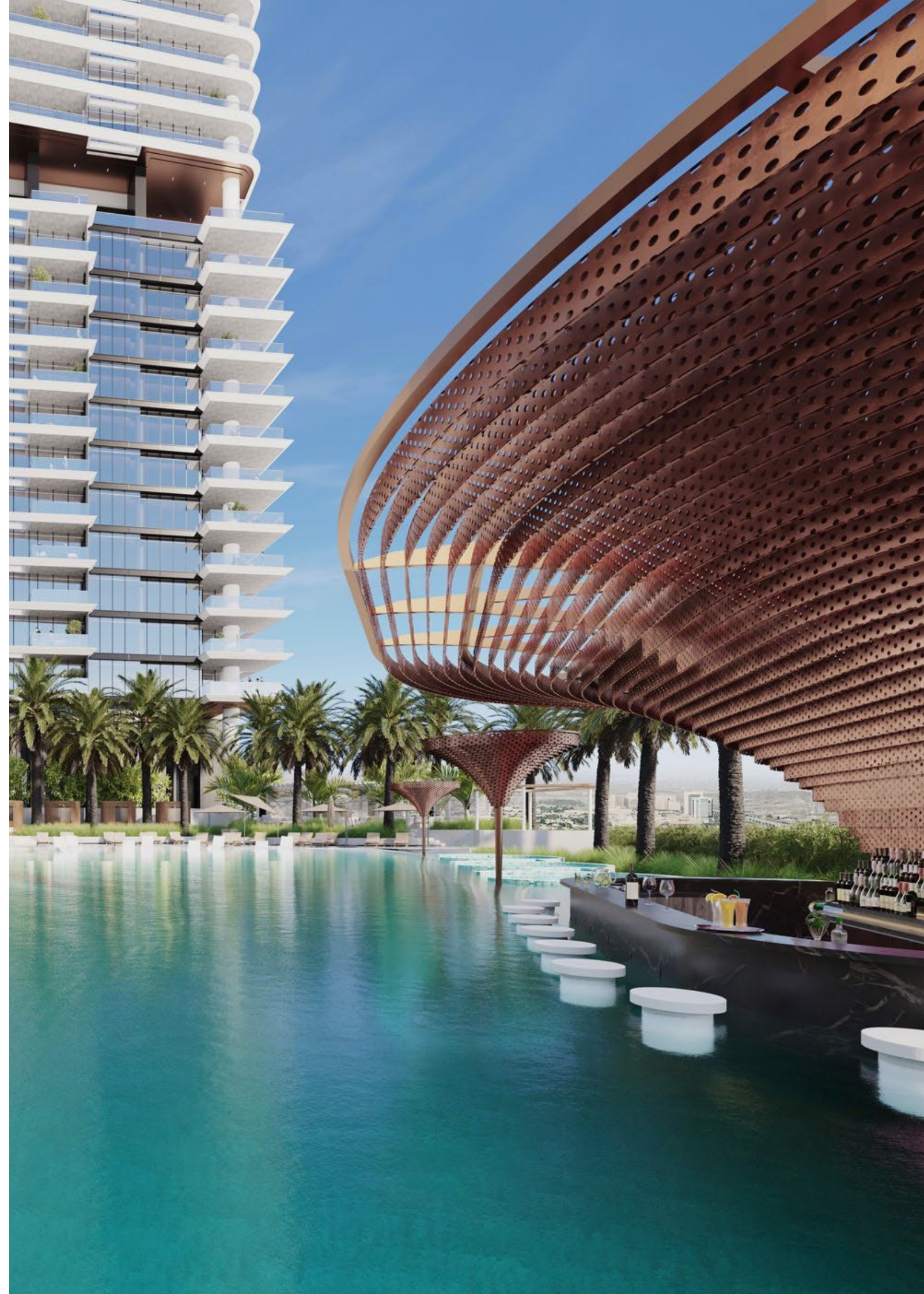




# URBAN BEACH BEACH

The ideal place to cool down, unwind, and reconnect, the urban beach club is a social hotspot, in the direct vicinity of the area's top dining venues, and retail spaces. Vibrant ambient music brings new energy to the space, while the island podium creates unique Instagrammable moments to capture memories.

Watch the sunset across Uptown's skyline while enjoying a beachside setting. Moments from your home, the urban beach club is set to be one of Uptown's most coveted venues.











# KIDS' PLAY AREA PLAY AREA



Mercer House encourages imaginations of all ages to run wild. Soft play areas with professionally-approved toys and structures transport children to a sub-aquatic universe. Through soft toys, ball pits, tunnels, and portholes, they can discover the wonders of the deep while engaging their motor skills and embracing their creativity.









# GAMES ROOM

This futuristic space sits in the heart of Mercer House. It is an immersive showcase of cutting-edge digital entertainment, featuring an arcade zone, Dance Revo, and a karaoke room. With a cacophony of lights and colour, it attracts residents of all ages to hone their gaming skills or show off their musical talents.



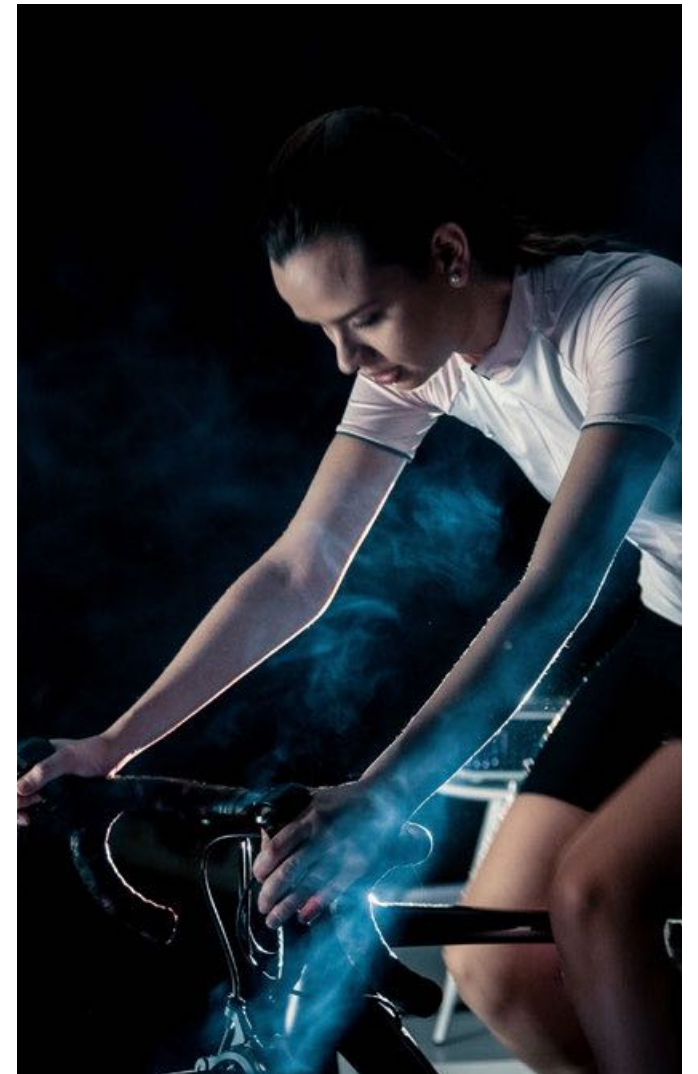








# FITNESS STUDIO STUDIO



The fitness studio is equipped with weight-lifting, yoga equipment and high-end cardio, including a state-of-the-art pedal-powered light display system. After a revitalising workout, a soothing spa session, among natural finishes and ocean views awaits.





THE  
**TRACK**  
• KEEP FIT •

No. 25.061193, 55.139566  
UNITED ARAB EMIRATES  
DUBAI





# SCENIC CALINA SAUNA

Wellbeing at Mercer House comes with a contemporary take on the traditional wood-panelled sauna. The feature is designed to enhance your experience with ambient sights and sounds that bring the viewer closer to the natural world.





# ICE ROOM

To help your body re-energise after the heat of a sauna or the intensity of a workout, Mercer House invites you to complete your wellness experience in the Ice Room. A technological innovation of its kind, a ceiling-mounted 'ice fall' fills a basin to re-invigorate your strength with a blast of cold to boost your energy levels.











# RESIDENTIAL CLUBHOUSE

The Clubhouses is design with sumptuous contemporary furniture, self-serve coffee bars, music, books, and games. The spaces extend outside to breathtaking views from a landscaped terrace, bringing elements of nature closer to home. By day, a sophisticated brunch spot, by night a collection of vibrant dining venues.



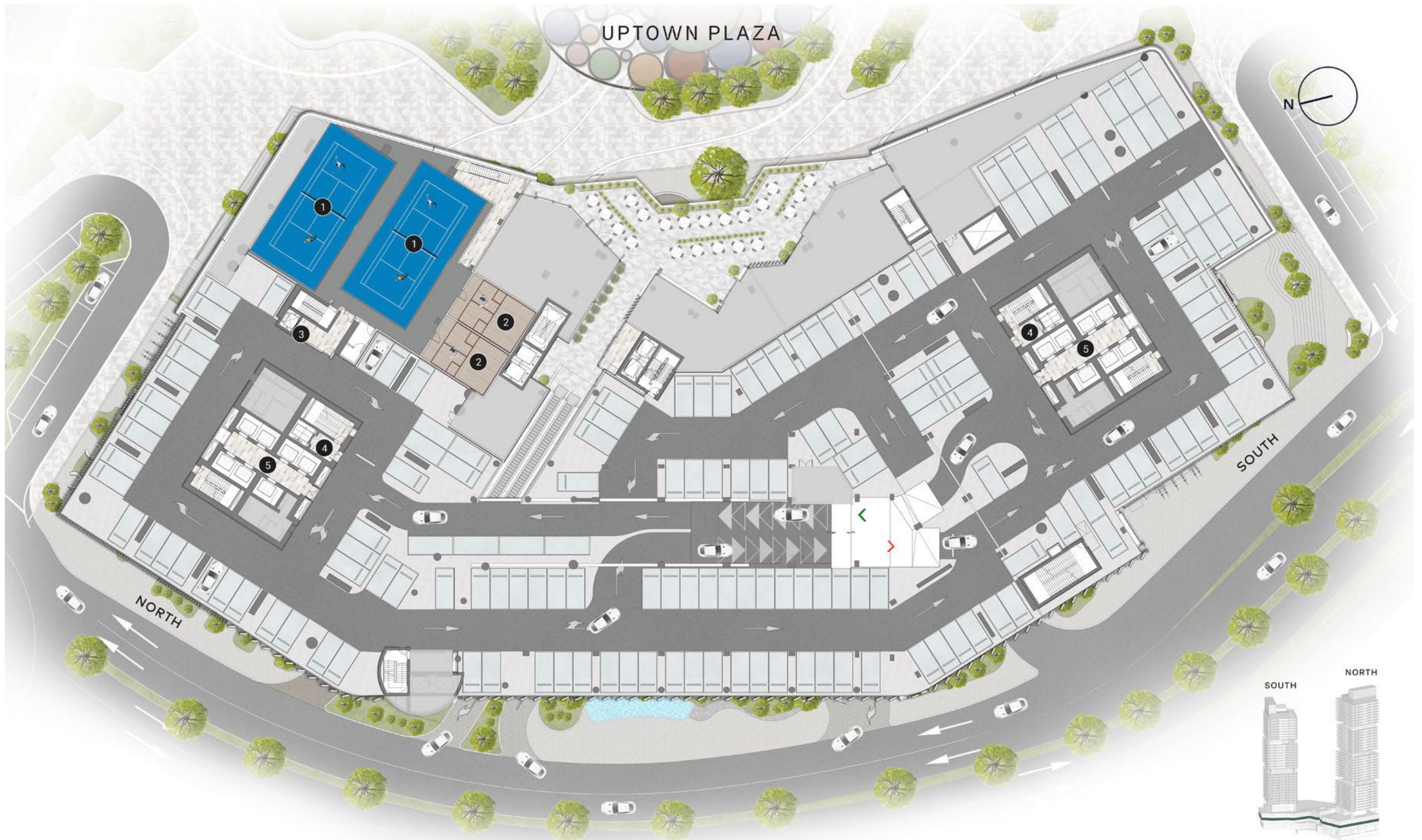








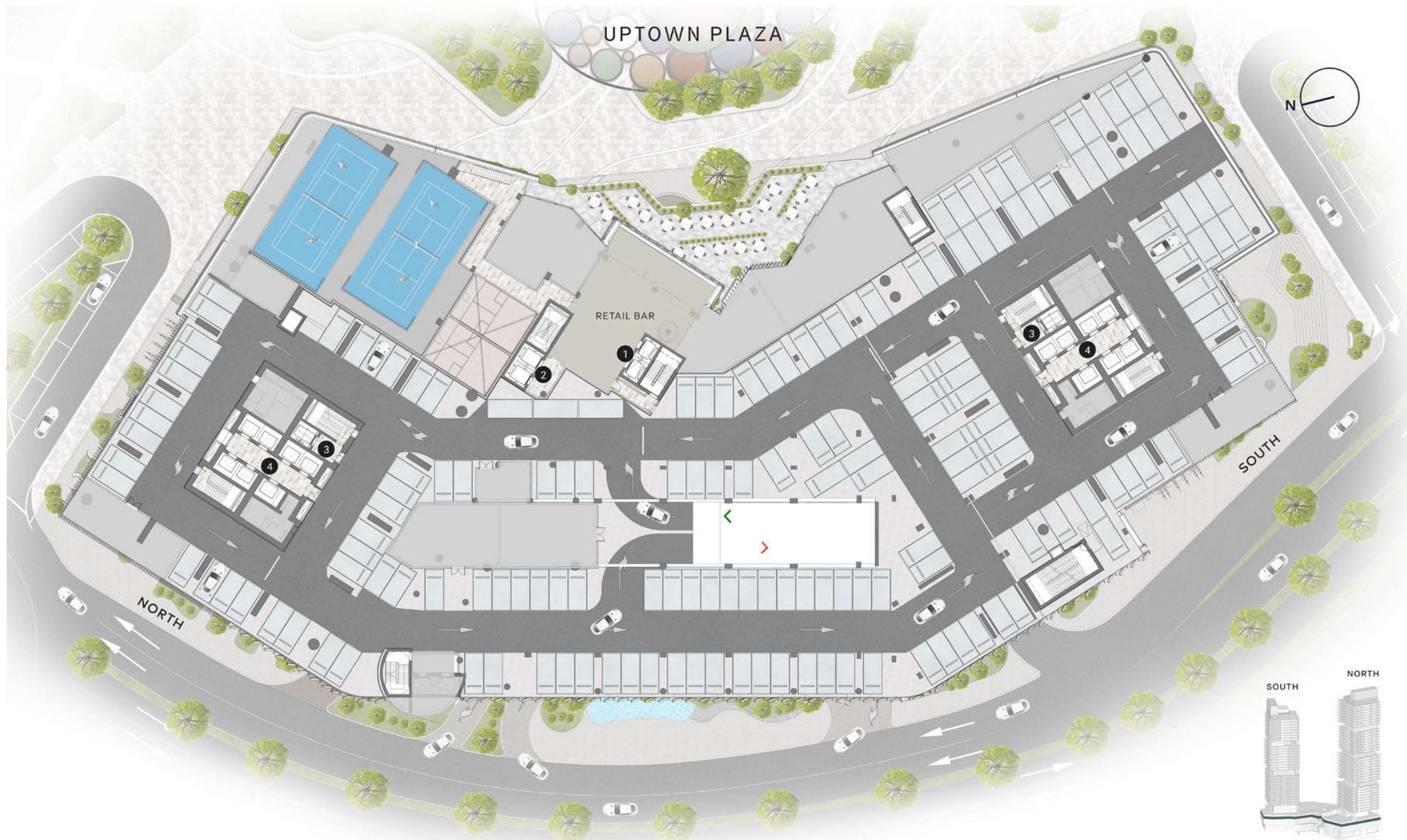




### PODIUM 3 FLOOR AMENITIES PLAN

- |                 |                           |                         |
|-----------------|---------------------------|-------------------------|
| 1 PADEL COURTS  | 3 SPORTS HALL LIFT        | 5 RESIDENTS LIFTS LOBBY |
| 2 SQUASH COURTS | 4 RESIDENTS SERVICE LIFTS |                         |





UPTOWN PLAZA

RETAIL BAR

SOUTH

NORTH

### PODIUM 4 FLOOR AMENITIES PLAN

- |                             |                           |
|-----------------------------|---------------------------|
| 1 VISITORS F&B/RETAIL LIFTS | 3 RESIDENTS SERVICE LIFTS |
| 2 F&B/RETAIL SERVICE LIFTS  | 4 RESIDENTS LIFTS LOBBY   |



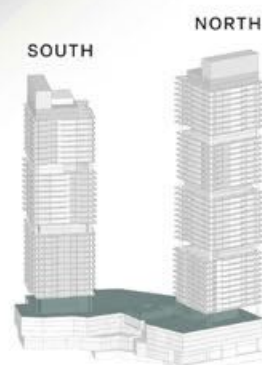


UPTOWN PLAZA



SOUTH

NORTH



## 1<sup>ST</sup> FLOOR AMENITIES PLAN

### URBAN BEACH CLUB

- |                       |                 |
|-----------------------|-----------------|
| 1 BEACH POOL          | 6 POOL BAR      |
| 2 BUBBLE POOL         | 7 DJ BOOTH      |
| 3 BEACH LOUNGERS AREA | 8 ISLAND PODIUM |
| 4 SUN LOUNGERS AREA   | 9 FIRE PIT      |
| 5 BEACH CABANAS       | 10 BEACH BAR    |

- |                            |
|----------------------------|
| 11 BEACH CLUB CHANGE ROOMS |
| 12 BEACH CLUB LIFT         |
| 13 BEACH CLUB ARRIVAL AREA |
| 14 CLUBHOUSE F&B           |
| 15 OUTDOOR DINING AREA     |

### EXCLUSIVE RESIDENT AMENITIES

- |                             |                           |                                      |
|-----------------------------|---------------------------|--------------------------------------|
| 16 FAMILY POOL              | 21 OUTDOOR SEATING        | 26 KIDS WET PLAY AREA                |
| 17 POOL DECK                | 22 OUTDOOR BARBEQUE AREA  | 27 INDOOR KIDS PLAY AREA             |
| 18 MALE/FEMALE CHANGE ROOMS | 23 OUTDOOR DINING         | 28 SING & DANCE REVOLUTION AREA      |
| 19 RESIDENTS LIFTS LOBBY    | 24 OUTDOOR GAMES AREA     | 29 ARCADE ZONE                       |
| 20 RESIDENTS SERVICE LIFTS  | 25 OUTDOOR KIDS PLAY AREA | 30 RESIDENTS CLUBHOUSE (SOUTH TOWER) |





## 12<sup>TH</sup> FLOOR AMENITIES PLAN

- 1 PRIVATE DINING
- 2 INDOOR DINING
- 3 INDOOR LOUNGE
- 4 KITCHEN
- 5 PANTRY
- 6 MEETING AREA
- 7 OUTDOOR LOUNGE
- 8 OUTDOOR DINING
- 9 WASHROOM
- 10 RESIDENTS LIFTS LOBBY
- 11 RESIDENTS SERVICE LIFT
- 12 CLUB TERRACE

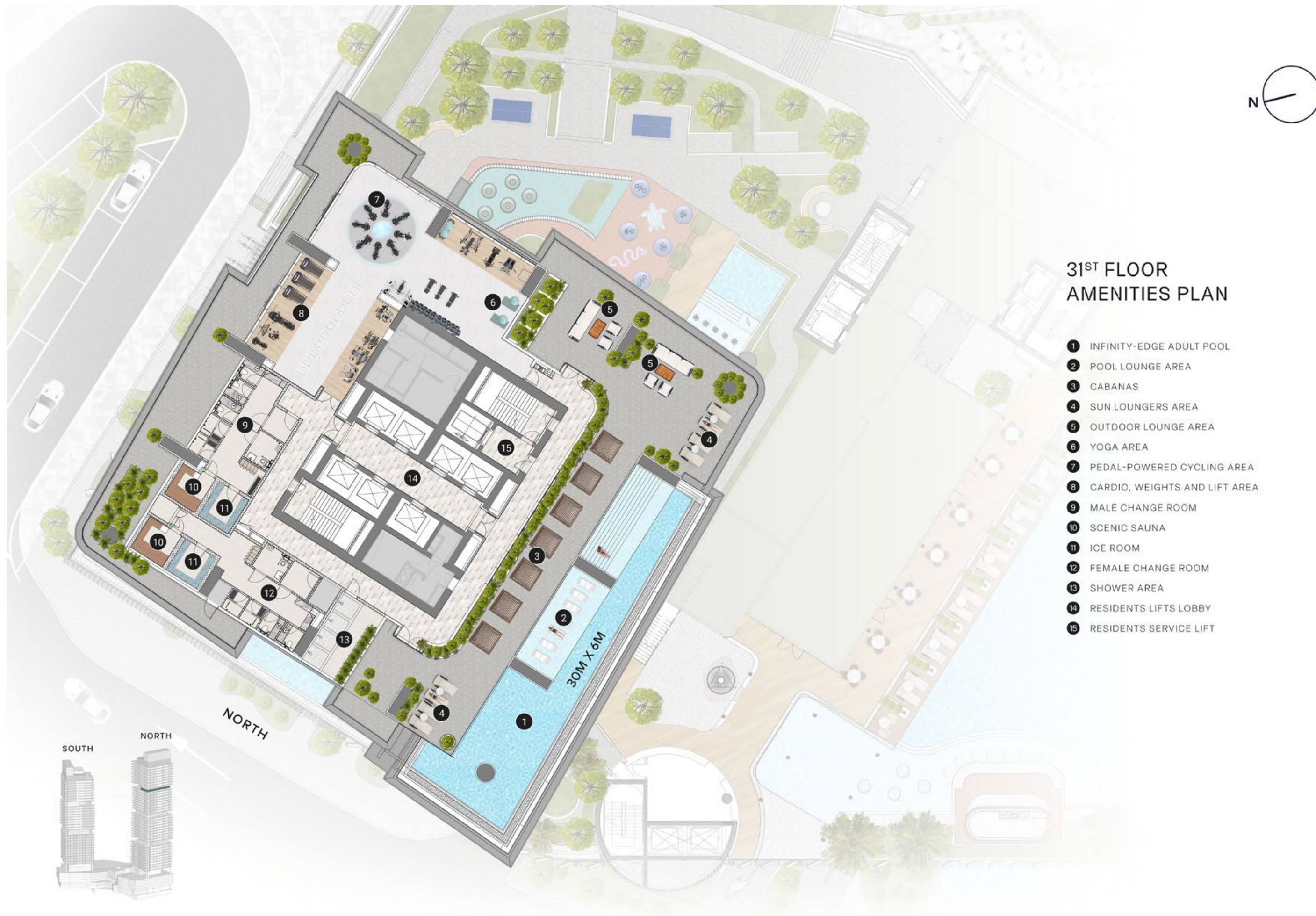


## 24<sup>TH</sup> FLOOR AMENITIES PLAN

- 1 INFINITY-EDGE POOL
- 2 POOL LOUNGE AREA
- 3 CABANAS
- 4 SUN LOUNGERS AREA
- 5 OUTDOOR LOUNGE AREA
- 6 YOGA AREA
- 7 PEDAL-POWERED CYCLING AREA
- 8 CARDIO, WEIGHTS AND LIFT AREA
- 9 MALE CHANGE ROOM
- 10 SCENIC SAUNA
- 11 ICE ROOM
- 12 FEMALE CHANGE ROOM
- 13 SHOWER AREA
- 14 RESIDENTS LIFTS LOBBY
- 15 RESIDENTS SERVICE LIFTS











# RESIDENCES RESIDENCES





# RESIDENTIAL PENTHOUSES

Contemporary curves, modern accents, and soft detailing create a perfect balance with the textures, patterns, and furnishings inside.

The kitchens of Mercer House are equipped with high-end amenities, practical hidden storage, and thoughtful design touches. The kitchen island is chic, striking, ingenious, and functional, the counter features a pull-out accent table to add more versatility to the most sociable place in your home.







LIVING AND DINING





KITCHENS





# CONTEMPORARY HOMES



Soft, intimate lighting and thoughtful design create an idyllic place to end and begin each day at Mercer House. Elegant accents and high-end features bring a contemporary charm to your daily cleansing rituals. In the master bathroom, an elegant shower takes centre stage, illuminated in natural light under the lofty ceilings.

The shower area is concealed behind fluted glass, offering privacy with a touch of elegance.





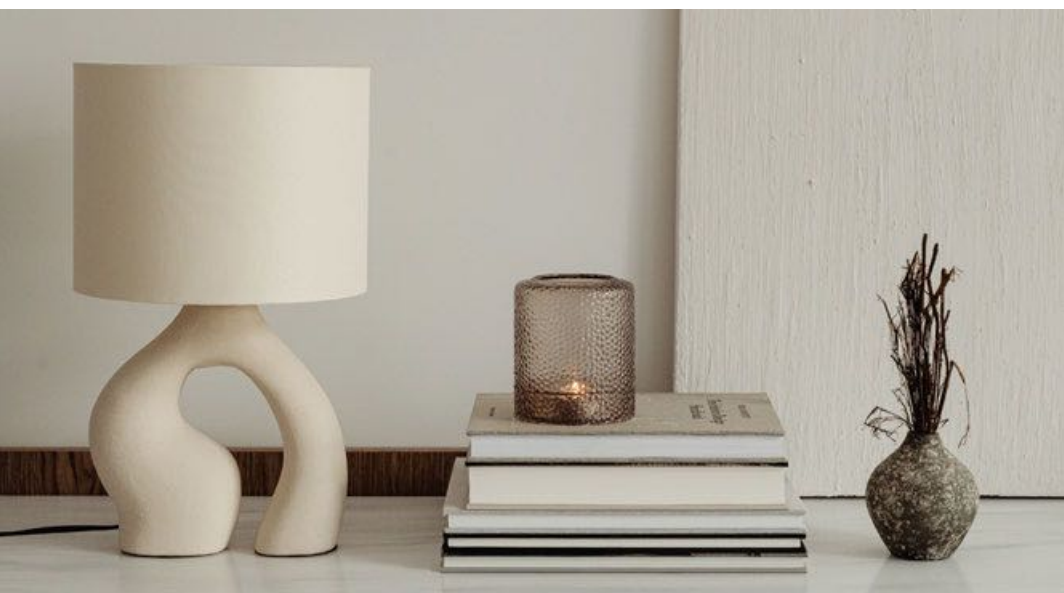
BEDROOMS





BATHROOMS





# RESIDENTIAL APARTMENTS

Your home at Mercer House is designed to welcome you into a place of sophisticated modern calm. Natural light flows in through floor-to-ceiling windows, accentuating the harmony between soft furnishings, natural curves and crisp detailing inspired by the building's facade.

Natural wood and stone finishes add a warm, homely feel to the modern functionality of Mercer House kitchens. As a place to cook, dine, share and socialise, space is maximised with slick storage solutions and high-end amenities.







LIVING AND DINING



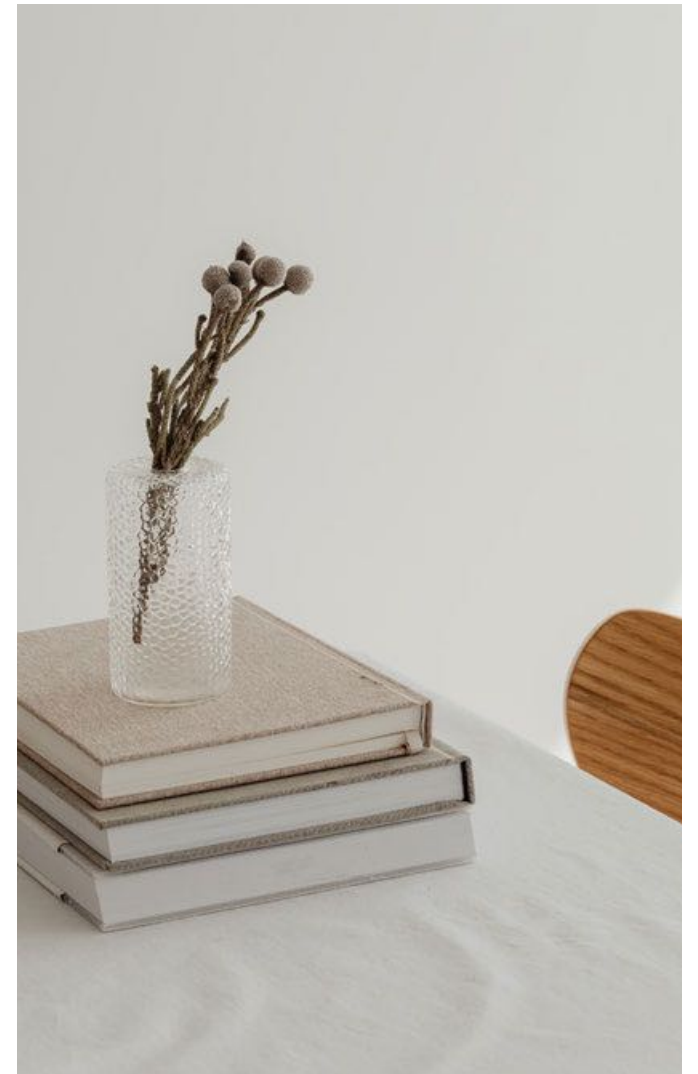


KITCHENS





## SLEEK AND MODERN MODERN



Wake up to crisp sunlight and impressive views and fall asleep to the twinkling lights of Uptown's skyline from a place of serene comfort. Light natural tones and copper detailing bring a sense of intimacy, providing the key ingredients for a room to make your own.

A sophisticated configuration makes it easy to indulge in your self-care rituals and begin your day feeling refreshed and revitalised. Marble and natural wood imbue the healing properties of nature, while smart storage solutions and soft lighting add a sense of elegant minimalism to the space.





BEDROOMS



## BATHROOMS







Founded in 2014, Ellington Properties is Dubai's leading design-led real estate developer and endeavours to craft beautiful Dubai properties and communities for high-quality lifestyles. Ellington homes are designed to inspire, with a vision to create living spaces that add value and contentment every day, supporting people as they journey towards their dreams and aspirations. Maintaining a focus on the aesthetic, the functionality and the convenience of the living space, our aim is to offer a beautiful backdrop for our residents' stories, developing spaces where they can grow, prosper and live life on their own terms.



